

MANDATORY DISCLOSURE

Date & Period of last Approval N/A

1. INSTITUTION DETAILS

Name Of the Institution: INSTITUTE OF INTERNATIONAL EXCELLENCE

Address of the Institution:

City & Pin Code

State /UT Uttar Pradesh

Longitude & Latitude 77.06 & 11.09

Phone number with STD code 0120-4348911/12

FAX number with STD Code 0120-4348916

Office hours at the institution 08 30 AM to 05 30 PM

Academic hours at the institution 09 00 AM to 04 30 PM

E-mail secretary@iie.ac.in

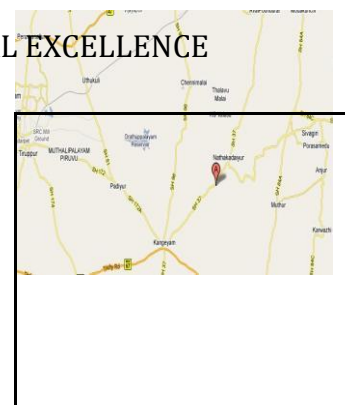
Website www.iie.ac.in

2. TYPE OF INSTITUTION

Type of the institution Private-Self Financed

Category (1) of the Institution Non Minority

Category (2) of the Institution Co-Ed



3. ORGANIZATION DETAILS

Name of the Organization running the institution	Erode Builder Educational Trust
Type of the Organization	Trust
Address of the Organization	281-300, VILLAGE DOTAI/KHILWAI, GARH MEERUT ROAD, GARHMUKTESHWAR DISTT HAPUR
Website of the Organization	www.iie.ac.in

4. HEAD OF THE INSTITUTION

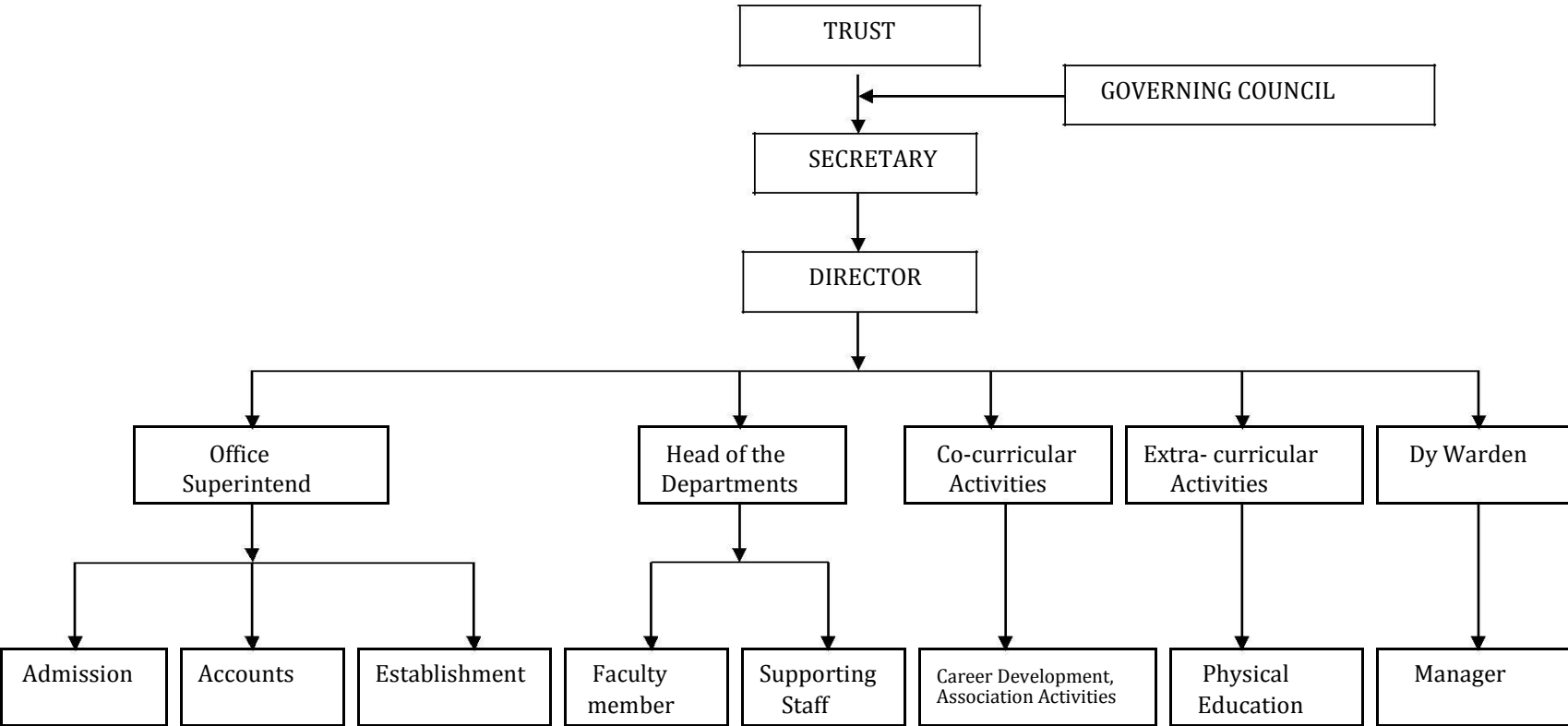
DIRECTOR

Name of the Director	R.K UPADHYAY
Exact Designation	Director
Phone number with STD code	0120-4348911/12
FAX number with STD Code	0120-4348916
E-mail	director@iie.ac.in
Highest Degree	Ph. D

5. Governing Board Members (Governing Council)

Sl. No.	Name	Position	Educational Qualification	Present Designation /Occupation
1.	Mr. Puneet Kumar	SECRETARY	B.tech	Secretary, IIE
2.	Mr Atul Goel	PRESIDENT	M.TECH	President IIE
3.	Mrs Megha goel		D-PHARMA	
4.	Mr R.K Upadhyay	DIRECTOR	MSC.	Director,IIE
5.		PRINCIPAL	M-PHIL- PHD	Principal,IIE
6.	Mr. Tariq Mirza	Members	B.E.,	
7.	N. Kulvinder			
8.	Mr. Yadvinder Mittal		M.E.,	
9.	Mr. Niladri Das		Ph.D.,	

6. Organizational Chart



7. STUDENT FEEDBACK MECHANISM ON INSTITUTIONAL GOVERNANCE/FACULTY PERFORMANCE

The students are accommodated 60 in a class and one faculty is appointed as a counselor / faculty advisor to look into their grievances, family problems, personal problems and so on. Each class has a class committee comprising of the faculty members and the students' representatives. The class committee meets and discusses the academic related issues in the end of every month.

The performance of the faculty is regularly assessed through students' feedback and self appraisal. Necessary corrective measures will be taken to improve teaching learning process. The faculty members will encourage and counsel the students after class hours by internal meetings, discussions and provide guidance to the students to improve their academic performance.

8. GRIEVANCE REDRESSAL MECHANISM FOR FACULTY MEMBERS, STAFF AND STUDENTS

The institute has a grievance redressal cell headed by Dr.R.K UPADHYAY, the DIRECTOR, who is a retired Professor of CCS UNIVERSITY, where he will interact with the faculty members, staff and students would facilitates for their effective redressal grievances in all nature.

9. Infrastructure Information

Class Rooms	-	2 Nos
Tutorial Rooms	-	1 Nos including
Labs (66 sqm)	-	8 Nos
Workshop (200 sqm)	-	1+4 Nos for Additional Workshop
Drawing Hall	-	1 No (425 sqm)
Seminar Halls	-	1 Nos
Library & Reading Room	-	151 sqm
Computer Centers	-	3 NOS

Computer Centre facilities

❖ Number and Configuration of Systems:

Server (HP Blade)	-	4 Nos
PCs - HP DX2480 / E7400	-	200 Nos
- HP DX2480 / E2180	-	24 Nos
- HP Pro 3090 / E5400	-	30 Nos
- HP Pro 3090 / E7500	-	180 Nos
- Wipro / Core i3	-	70 Nos
- HP Elite 7100 / Core i3	-	50 Nos
- Lenovo / Core i3	-	50 Nos
- Dell / Core i3	-	30 Nos
- HP Pro 3330 / Core i3	-	190 Nos
- HP Pro 3330 / Core i5	-	44 Nos
Total	-	868 Nos

❖ Total number of systems connected by LAN / WAN:

25 Nos.

❖ Internet band width:

- 20 mbps

Library Facilities

- ☐ **Number of Library books/Titles/Journals available**
- ☐ **(Total Area of Library : 151 Sq.m**

Sl. No.	Description	No. of Books (Volumes) available
1	Pharmacy	200

- ❖ **List of online National/International Journals subscribed.**

Sl. No.	Name of the Course	No. of Journals	
		National	International
	D-Pharma	8	

- ❖ e-Library facilities

No. of PCs for Digital Library	-	20
No. of e-Journals subscribed	-	3

Auditorium / Seminar Halls / Amphi

- ❖ A well equipped modern auditorium with capacity of 100.

Cafeteria

Spacious clean and green cafeteria is made available to cater the need of the students.

Facilities for disabled

Management has provided ramp and western toiletries to differently abled students for their convenience

Any other facilities

Buses are plying between the institutions and students destinations .It covers many districts namely Erode ,Tiruppur and Karur etc. A separate RO plant has been established in the Campus. 24x7 Internet Services are available for the students.

Medical & Other Facilities

Part time physician visits once in a 2 days

- ❖ Separate vehicle facility in case of emergency
- ❖ Purified and Mineral water is available in both hostels.
- ❖ A Separate room with multimedia facility and internet facility available in both hostels

10. Academic Sessions	: June - May
Examination System , Year/Sem.	: 2 semesters/ year
Period of declaration of results	: One month after the University examinations

11. Counseling / Mentoring

For every class there will be a class advisor / mentor, who is senior in the department and he will keep track of the regularity and academic performance of the students. If needed, proper counseling will be given to the students.

Career Counseling

Class advisor/ mentor, along with HOD of the concerned department will be the team for counseling the student towards his/her academic and other activities. Proper suggestions will be given to the student and he/she will be evaluated for achieving the same. Proper measures will be taken in case of deviation.

Medical facilities

A separate room is arranged and a physician will visit to the campus once in three days. He will take care of the students in the campus itself. Apart from this vehicle facility is also made to available in case of emergency.

Student Insurance

Group insurance is made for Students, Faculty and Staff Members with National Insurance Company Ltd., Salem

12. Students Activity Body

For uplifting the talents of our students at different levels, some of the clubs are constituted namely Shelly English Club, Fine Arts Club, Science Club, Photo Club, Innovators Club etc. These clubs will motivate the students in their area of interest.

Cultural activities

A fine arts club is established to motivate the students towards their interest in cultural talents. Once in a fortnight, the club use to conduct at least one event on a specific area.

Sports activities

Well laid out and maintained play field about 12 acres. Adventure sports club for recreation and to develop leadership qualities. Students are continuously encouraged to participate in inter- collegiate /inter university/ state /national level sports and games.

Literary activities

To develop and motivate the literary activities inside the campus, a Shelly English Club was constituted. The club will conduct a variety of events such as guest lectures, invited talks, other programmes etc. to make the students aware of the literacy.

Magazine / Newsletter

All the 3 faculties of EBET Group of Institutions are publishing Bi-annual News Letters named "Kalanjium" by FoE, "Budhi" by FoM and "Virutcham" by FoC, which updates the information of the institution and it reflects students and faculty talents.

13. CONTACT

Name of the Information Officer for

RTI Designation

- Mr. R.K Upadhyay

Phone number with STD

- Director

code FAX number with STD

- 0120-4348911/12

Code Mobile number

- 0120-4348916

E-mail

- 9811089944

director@iie.ac.in

www.iie.ac.in